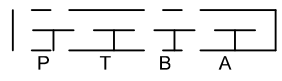
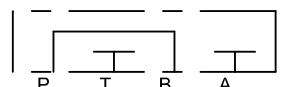


BFPF/BFPL

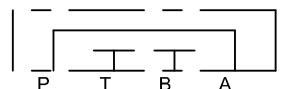
BFPP



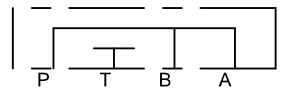
BFPF-03



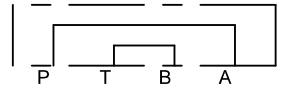
BFPL-03-PB



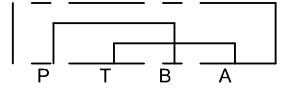
BFPL-03-PA



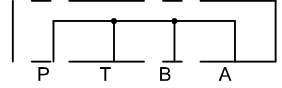
BFPL-03-PAB



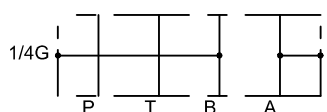
BFPL-03-PA-BT



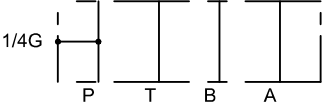
BFPL-03-PB-AT



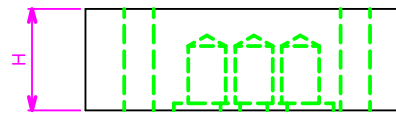
BFPL-03-ABPT



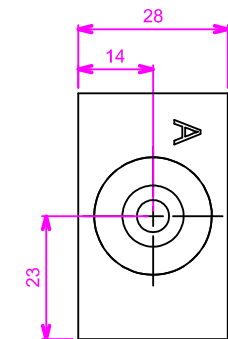
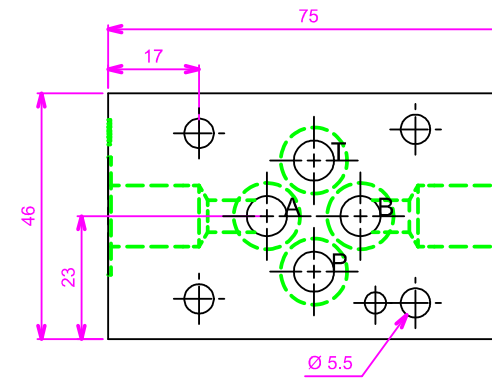
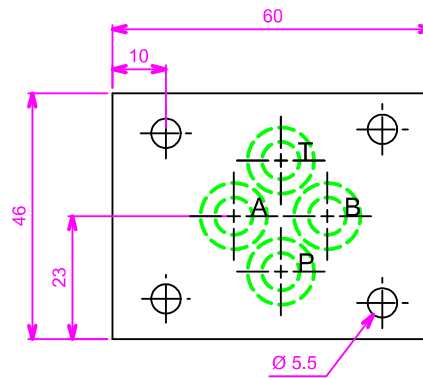
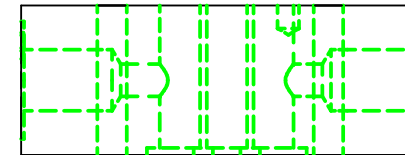
BFPP-03-AB-1/4G



BFPP-03-P-1/4G



H : 11.5 pour BFPF
H : 19 pour BFPL



Pour le BFPP-03-P-1/4G
l'orifice 1/4G est coté A

PLAQUES
CETOP 3
ISO 4401-03
Pression maxi : 315b

Autres fonctions sur demande
Nous consulter

Schéma client n° :	Face en contact Ra=1.6
Nomenclature client n° :	Tolérances générales JS 13

Rev.	Objet de la modification :	Date :
Client : HYDRAUMATEC		Format : A3
 Ce plan est notre propriété. Il ne peut être ni communiqué, ni reproduit sans autorisation. HYDRAUMATEC Parc d'Activités de Camagnon 56800 PLOERMEL E-mail: contact@hydraumatec.com Tél:02/97/93/41/59 Fax:02/97/93/47/31	BLOC FORE	 Echelle : 1:1
	Date : 24/02/2011	N° plan : BFPx-03
Auteur : MB	Vérifié par :	